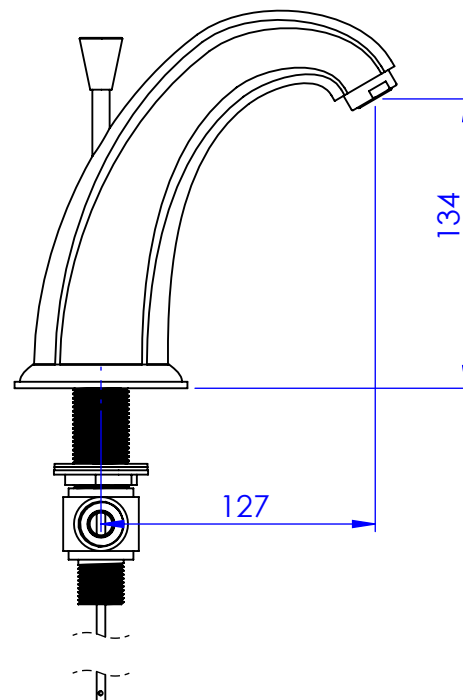
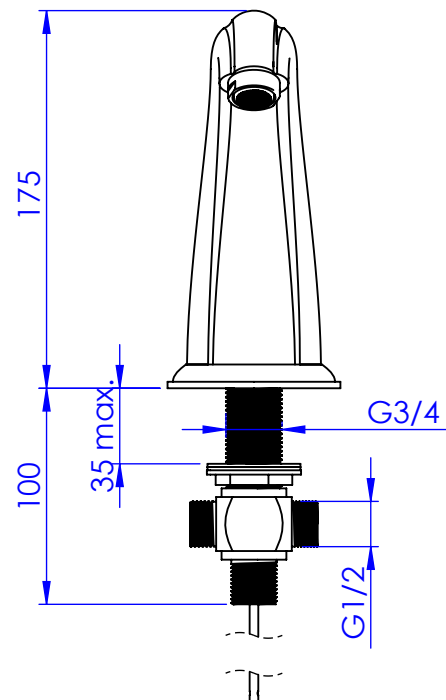


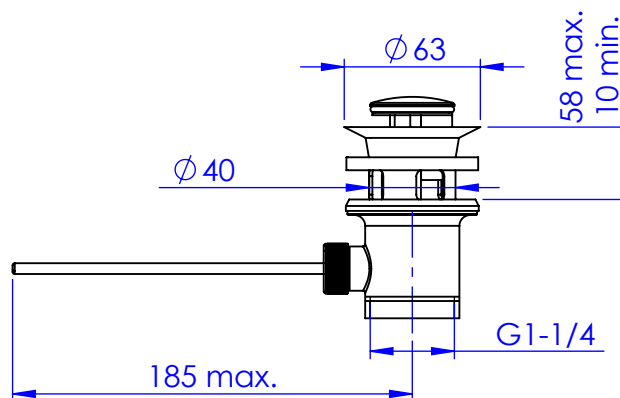
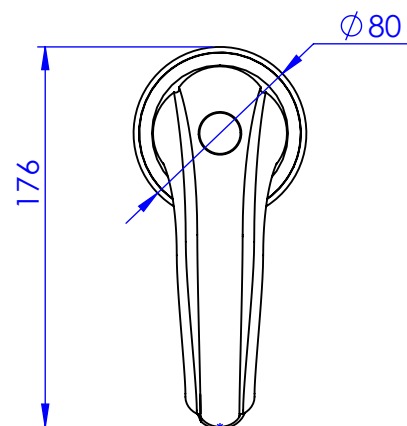
Collection : Odiot

Bec de lavabo sur gorge, avec flexible et vidage.
Basin spout, rim mounted with flexible hose.

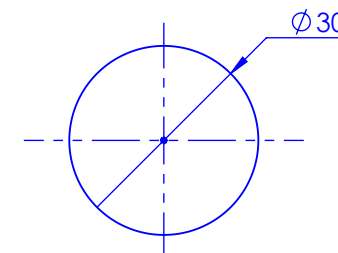
Ref : C65-1S1



Débit / Flow rate : 25 l/min (sous 3 bars).
Pression maxi / max pressure : 5 bars.



ø de perçage recommandé.
ø recommended drilling.



Informations :

Raccordement par flexibles inox tressés (lg 300mm). / Connected by stainless steel hoses (lg 11,80 inch)
Vidage fourni (voir fiches techniques.) / Waste included (see technicals drawings.)